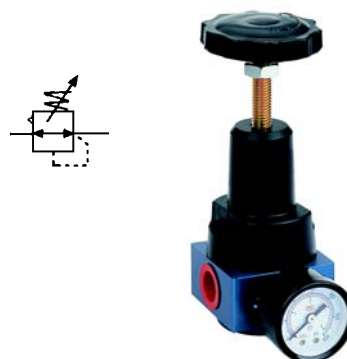


## How to order:

**QTY** — **H** — **15**

Regulator High pressure Port Sizes

8:G1/4"	20:G3/4"
10:G3/8"	25:G1"
15:G1/2"	

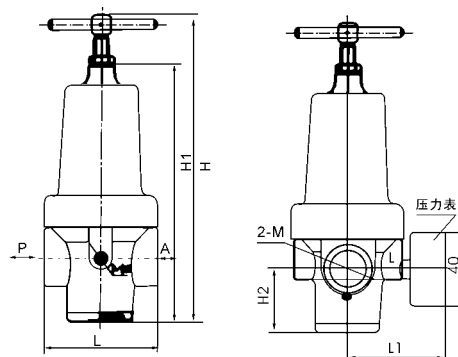


## Specifications:

Fluid	Air
Ambient temperature	-25°C~ + 80°C
Max.Working Pressure(Mpa)	4
Dehydrating Precision	≥ 80%
Filter rating	25~50 μ m

## Dimensions(mm):

Port Size	Code	L	L1	H	H1	H2	M	M1
8		55	60	140	100	22	G1/4	G1/4
10		55	60	140	100	22	G3/8	G1/4
15		55	60	140	100	22	G1/2	G1/4
20		75	72	190	159	50	G3/4	G1/4
25		75	72	190	159	50	G1	G1/4

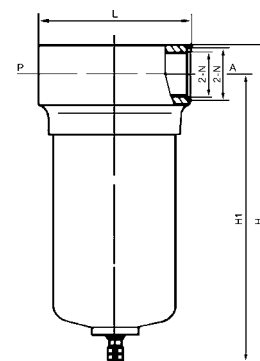


## How to order:

**QSL** — **H** — **15**

Filter High pressure Port Sizes

8:G1/4"	20:G3/4"
10:G3/8"	25:G1"
15:G1/2"	



## Specifications:

Fluid	Air
Ambient temperature	-25°C~ + 80°C
Max.Working Pressure(Mpa)	4
Dehydrating Precision	≥ 80%
Filter rating	25~50 μ m

## Dimensions(mm):

Port Size	Code	L	H	H1	M
10		60	160	145	G3/8
15		60	160	145	G1/2
20		90	215	190	G3/4
25		90	215	190	G1